

Kuwait City

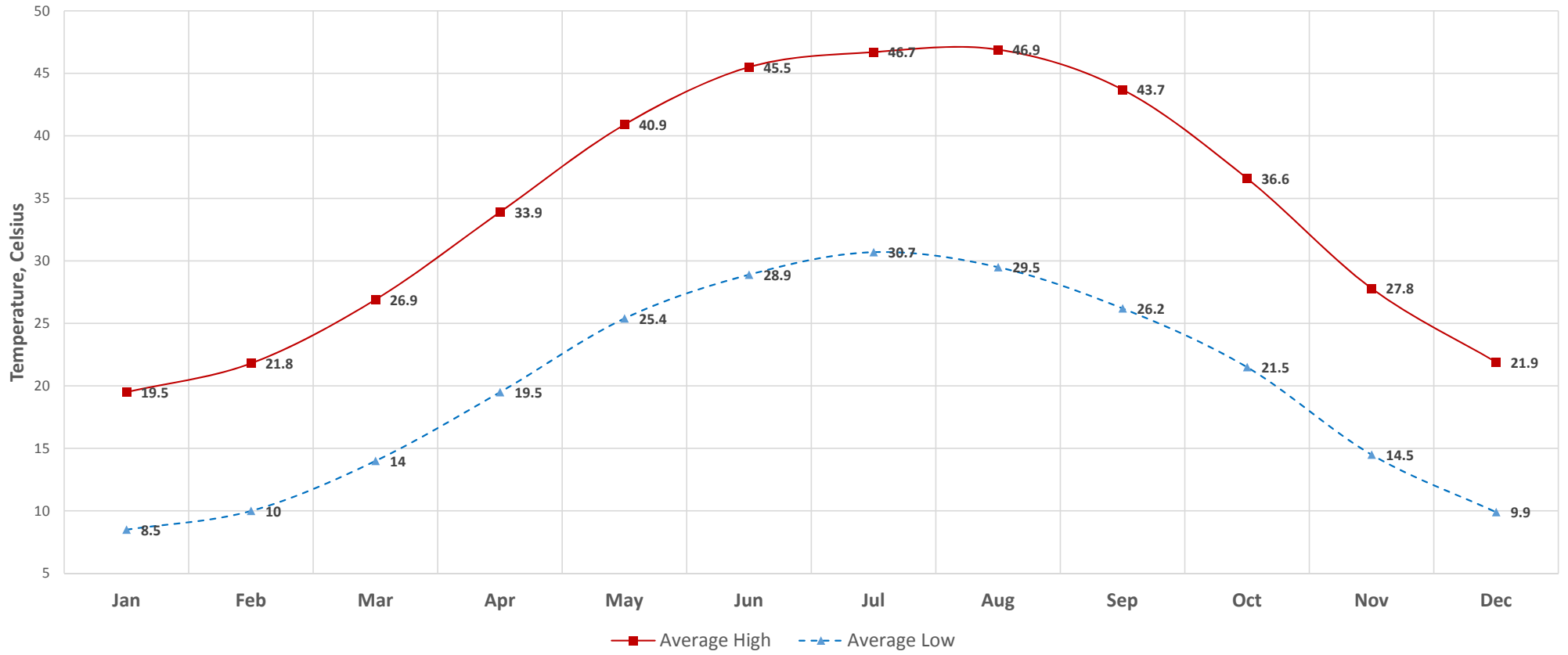




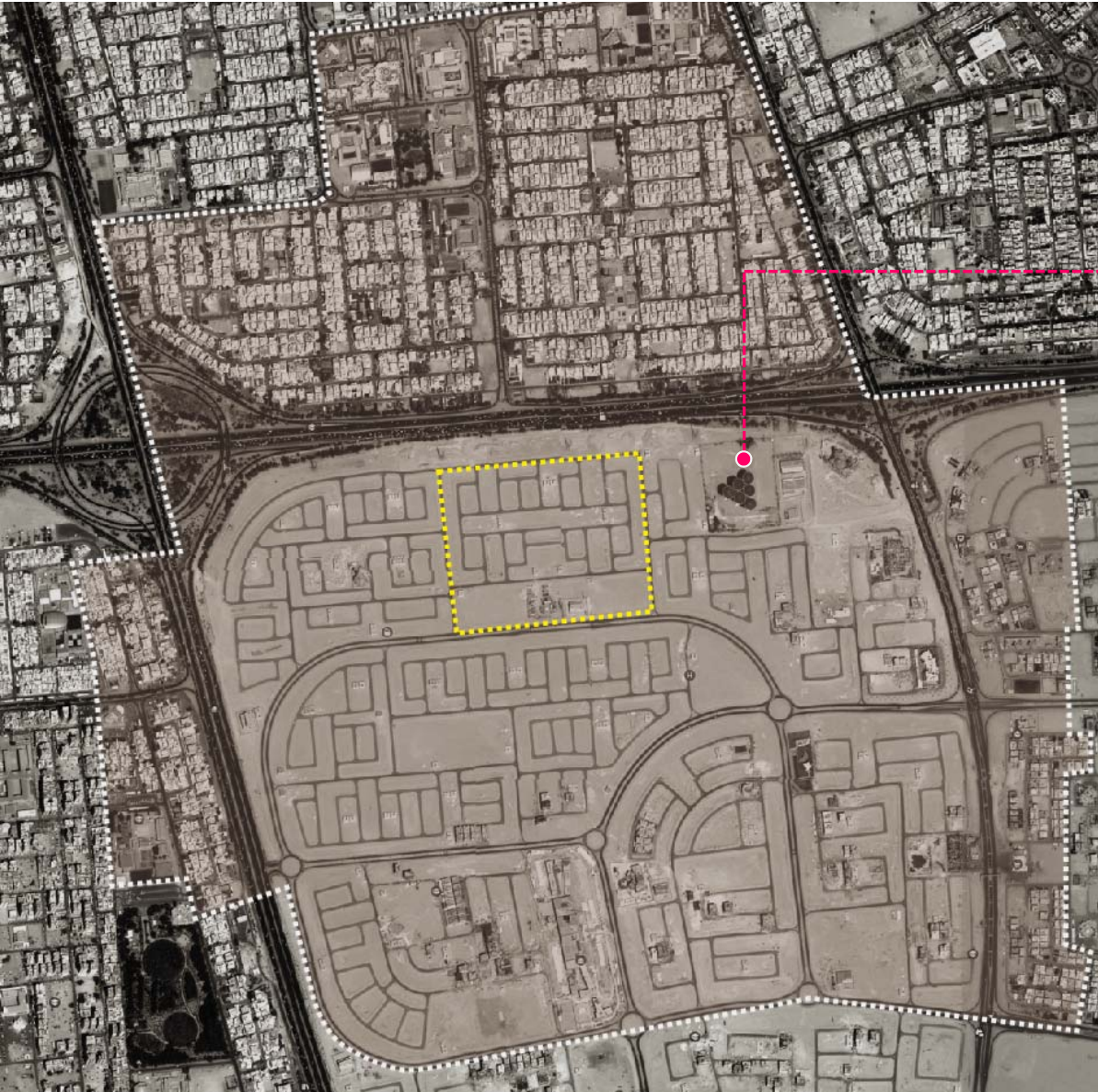
Select Facts

- Founded in 1613
- Eastern coast of Kuwait
- 2.3 million inhabitants
- Hot and dry desert climate
- Top Ten Country for energy use per capita
- Buildings consume 40% of primary energy
- 1 – 5 sandstorms per year

Kuwait City Average High and Low Temperatures



Kuwait City



Al Sideeq Neighborhood

Site Boundary
Al-Sideeq

Block 1_Site



Water Tanks



Mosque



Residential

