



**From ultra-soft slime to hard alpha-keratins: The many lives of intermediate filaments**

Journal:	<i>Integrative and Comparative Biology</i>
Manuscript ID:	draft
Manuscript Type:	Symposium Paper
Date Submitted by the Author:	
Complete List of Authors:	Fudge, Douglas; University of Guelph, Integrative Biology Winegard, Timothy; University of Guelph, Integrative Biology Ewoldt, Randy; Massachusetts Institute of Technology, Mechanical Engineering Beriault, Daniel; University of Guelph, Integrative Biology Szewciw, Lawrence; University of Guelph, Integrative Biology McKinley, Gareth; Massachusetts Institute of Technology, Mechanical Engineering
Keywords:	biomaterials, intermediate filament, hagfish, slime, cytoskeleton, keratin



## From ultra-soft slime to hard alpha-keratins: The many lives of intermediate filaments

D.S. Fudge<sup>1</sup>, T. Winegard<sup>1</sup>, R.H. Ewoldt<sup>2</sup>, D. Beriault<sup>1</sup>, L. Szewciw<sup>1</sup>, and G.H. McKinley<sup>2</sup>

<sup>1</sup>Dept. of Integrative Biology, University of Guelph, Guelph, ON N1G-2W1, Canada

<sup>2</sup>Hatsopoulos Microfluids Laboratory, Department of Mechanical Engineering, Massachusetts Institute of Technology, Cambridge, Massachusetts 02139, USA

### Author for Correspondence:

Dr. Douglas S. Fudge

T: (519) 824-4120 x. 56418

F: (519) 767-1656

dfudge@uoguelph.ca

### Running Title

Intermediate filament-based biomaterials

### Keywords

intermediate filament, biomaterials, hagfish, slime, cytoskeleton, keratin, cell mechanics

### Word Count

3764

**Abstract**

Intermediate filaments are 10 nm diameter filaments that make up an important component of the cytoskeleton in most metazoan taxa. They are most familiar for their role as the fibrous component of  $\alpha$ -keratins such as skin, hair, nail, and horn, but they are also abundant within living cells. Although they are almost exclusively intracellular in their distribution, in the case of the defensive slime produced by hagfishes, they are secreted. This paper surveys the impressive diversity of biomaterials that animals construct from intermediate filaments with an eye towards understanding the mechanisms by which the mechanical properties of these materials are achieved. Hagfish slime is a dilute network of hydrated mucus and compliant intermediate filament bundles with ultra-soft material properties. Within the cytoplasm of living cells, networks of intermediate filaments form soft gels whose elasticity arises via entropic mechanisms. Single intermediate filaments or bundles are also elastic, but substantially stiffer, exhibiting modulus values similar to that of rubber. Hard  $\alpha$ -keratins like wool are stiffer still, an effect that is likely achieved via dehydration of the intermediate filaments in these epidermal appendages. The diverse mechanisms described here have been employed by animals to generate materials with stiffness values that span an impressive eleven orders of magnitude.

## Introduction

The cytoskeleton of metazoan cells consists mainly of three filament types - 6-7 nm diameter F-actin filaments, 24 nm microtubules, and 10 nm intermediate filaments (Alberts et al., 2007). While the sequence, structure, and function of F-actin and microtubules are highly conserved across vast evolutionary distances, intermediate filaments are notable for their diversity. In humans alone, there are 70 intermediate filament genes (Human Intermediate Filament Mutation Database, [www. interfil.org](http://www.interfil.org)) in six distinct classes, and considering that many intermediate filament proteins can and do co-polymerize with several different partners, the number of unique 10 nm intermediate filaments in humans is likely in the hundreds. The diversity of intermediate filaments in other species is not as well-described, but is undoubtedly impressive given the diversity in humans.

While many of the functions of F-actin and microtubules are related to dynamic processes carried out by cells such as muscle contraction, mitosis, and intracellular trafficking (Alberts et al., 2007), intermediate filaments appear to be suited to more passive mechanical roles, and this likely has to do with their chemical stability. F-actin and microtubules exist in a dynamic equilibrium with soluble pools of monomers, and this, along with a dizzying number of proteins that can tip the equilibrium one way or another or modify the structure of the networks, allows these systems to respond rapidly to the needs and challenges of the cell. In contrast, intermediate filaments are far less soluble (Fey et al., 1984) and therefore well-suited to imparting passive mechanical integrity to cells and tissues. This is not to

1  
2  
3 say that the intermediate filament network in living cells is static - it must  
4  
5 disassemble and reassemble before and following cell division, and it is also known  
6  
7 to remodel in subtle ways to changes in the physical and biochemical environment  
8  
9 of the cell (Windoffer et al., 2004).  
10  
11

12  
13  
14 Cell biologists continue to find unique cellular functions for intermediate filaments  
15  
16 (Kim and Coulombe, 2007; Magin et al., 2007), but the one function that appears to  
17  
18 unite all six classes is a structural one. Evidence from a variety of sources including  
19  
20 transgenic animal models and human genetic diseases caused by mutations in  
21  
22 intermediate filament genes demonstrate that faulty or absent intermediate filament  
23  
24 networks often lead to fragile cells and tissues (Magin et al., 2004; Omary et al.,  
25  
26 2004). Intermediate filaments also make up the fibrous component of a group of  
27  
28 non-living biomaterials known as  $\alpha$ -keratins, which include the soft outer layer of  
29  
30 skin in amniotes known as the stratum corneum, as well as harder mammalian  
31  
32 structures such as hair, fur, nail, claw, hoof, and horn. In  $\alpha$ -keratins, intermediate  
33  
34 filaments play an obvious structural role given that they make up the largest volume  
35  
36 fraction of these non-living keratinized tissues.  $\alpha$ -keratins are crucial for water  
37  
38 conservation (stratum corneum) and heat conservation (hair and fur) in mammals  
39  
40 and therefore these versatile biomaterials likely played a crucial role in the  
41  
42 successful invasion of terrestrial habitats by vertebrates.  
43  
44  
45  
46  
47  
48  
49  
50

51  
52  
53 The mechanical properties of intermediate filaments have long been assumed to be  
54  
55 the same as the properties of  $\alpha$ -keratin fibres such as wool, based on the fact that  
56  
57  
58  
59  
60

1  
2  
3 wool consists primarily of aligned intermediate filaments (Bray, 2001; Howard,  
4  
5 2001). However, recent work suggests that intermediate filaments in cells are  
6  
7 radically different in their mechanics from wool fibres (Fudge et al., 2003; Kreplak et  
8  
9 al., 2005; Kreplak and Fudge, 2007). This insight has spawned new research into  
10  
11 the diverse mechanical functions of intermediate filaments, which is the focus of this  
12  
13 paper. Here we will highlight the mechanical behavior of four different materials,  
14  
15 each of which is built from intermediate filaments, and each of which performs a  
16  
17 unique mechanical function for the organisms that make them.  
18  
19  
20  
21  
22  
23

### 24 **Hagfish slime - an ultrasoft material**

25  
26 As a rule, intermediate filaments are strictly intracellular entities, whether they occur  
27  
28 in living cells or the non-living, keratinized cells within  $\alpha$ -keratins. Like much about  
29  
30 their biology, however, hagfishes are an exception - they are the only animal known  
31  
32 to secrete intermediate filaments, and they do so in their defensive slime (Downing  
33  
34 et al., 1981a; Downing et al., 1981b). Hagfishes (Fig. 1) are best known for their  
35  
36 ability to produce alarming quantities of slime when they are provoked or stressed,  
37  
38 and they do this by ejecting slime exudate from epidermally-derived slime glands  
39  
40 that line both sides of the animal's body (Downing et al., 1984; Spitzer et al., 1984;  
41  
42 Spitzer and Koch, 1998; Spitzer et al., 1988). Hagfish slime differs from other  
43  
44 slimes in that it contains not only slippery mucin-like molecules, but also a fibrous  
45  
46 component built from intermediate filaments (Fig. 2) (Koch et al., 1995; Koch et al.,  
47  
48 1994). The fibrous component originates within specialized cells in the slime glands  
49  
50 known as gland thread cells. These unique cells express intermediate filament  
51  
52  
53  
54  
55  
56  
57  
58  
59  
60

1  
2  
3 proteins that assemble into 10 nm intermediate filaments, which then bundle into a  
4  
5 single protein polymer thread that takes up the vast majority of the cytoplasmic  
6  
7 volume in mature cells. The thread is about 1  $\mu\text{m}$  at its narrowest and about 3  $\mu\text{m}$  at  
8  
9 its widest, and when it is fully unraveled, it can be about 15 cm long (Fudge et al.,  
10  
11 2005). How exactly the cell manages to build a continuous and mechanically  
12  
13 coherent 15 cm long thread within the cytoplasm is at this point a complete mystery.  
14  
15  
16  
17

18  
19  
20 One of the most remarkable things about hagfish slime is how much of it can be  
21  
22 made with so little starting material. A typical slime mass released by a hagfish has  
23  
24 a volume of about 900 mL, and this mass of slime contains only 20 mg of slime  
25  
26 threads and about 15 mg of mucins (dry weight)(Fudge et al., 2005). In contrast,  
27  
28 typical mucus secretions contain about the same mass of mucins *per milliliter*  
29  
30 (Sellers and Allen, 1989). Furthermore, the so-called superabsorbent materials, of  
31  
32 the kind that are used in disposable diapers, can absorb 50x their weight in water  
33  
34 (Dutkiewicz, 2002). In hagfish slime, the ratio is 26,000x. Don't look for hagfish  
35  
36 slime in diapers any time soon, however, because there is an important difference  
37  
38 between superabsorbent gels and hagfish slime that has to do with how the water is  
39  
40 immobilized.  
41  
42  
43  
44  
45  
46  
47

48  
49 In superabsorbent materials, water is tightly bound to the polymers to form a weakly  
50  
51 crosslinked gel, and this is why disposable diapers don't leak as long as their  
52  
53 capacity hasn't been exceeded. In contrast, the water in hagfish slime is not tightly  
54  
55 bound, and will leak out over the course of minutes under a suitable driving  
56  
57  
58  
59  
60

1  
2  
3 pressure (as when the slime is lifted into air) (Fudge et al., 2005). It is therefore not  
4  
5 appropriate to talk of the water *absorbed* by hagfish slime, aside from the small  
6  
7 volume taken up by condensed mucins that swell upon contact with seawater.  
8  
9 Instead, it appears that bulk seawater is *entrained* within minute spaces in the  
10  
11 slime, and it is the viscous resistance to the flow of water through this network of  
12  
13 pores that allows the slime to be lifted into air, at least momentarily.  
14  
15  
16  
17

18  
19  
20 The viscous entrainment of large volumes of water may at first appear like a  
21  
22 strange function for a material that is ejected by an animal when it is attacked.  
23  
24 However, this starts to make more sense when one considers the most likely  
25  
26 function of hagfish slime, which is to thwart attacks by gill-breathing predators (Lim  
27  
28 et al., 2006). One of the things that makes teleost fishes such effective predators is  
29  
30 their ability to capture prey via suction feeding, a process that is effected by a rapid  
31  
32 expansion of the buccal cavity and a subsequent inrushing of water. Suction  
33  
34 feeding is such a fast event that most prey typically have little chance of evasion  
35  
36 once the attack has been detected. Hagfishes have evolved a counter-attack  
37  
38 strategy that targets fishes where they are most vulnerable - the gills. We have  
39  
40 shown that hagfish slime dramatically increases the hydrodynamic resistance of  
41  
42 teleost gills, at least in freshly dead specimens, and the likely result for a predator  
43  
44 that gets a mouthful of slime is suffocation. The slime achieves this effect not by  
45  
46 binding seawater tightly, but rather by simply decreasing the size of the pores  
47  
48 through which the water must flow (Lim et al., 2006).  
49  
50  
51  
52  
53  
54  
55  
56  
57  
58  
59  
60



1  
2  
3 We recently began characterizing the material properties of mature hagfish slime  
4 using a torque-controlled cup-and-bob rheometer (Macosko, 1994). We performed  
5 creep tests, in which a small constant load was imposed (shear stress  $\sigma_0=0.01$  Pa)  
6 and the resulting strain  $\gamma(t)$  observed as a function of time. At long times, the strain  
7 approaches a constant,  $\gamma(t) \rightarrow \gamma_{ss}$ . The equilibrium elastic modulus of the sample  
8 can then be approximated by  $G_0=\sigma_0/\gamma_{ss}$ . We measured this elastic modulus to be  
9  $G_0=0.02$  Pa (Fig. 3), which is about six orders of magnitude more compliant than  
10 materials like gelatin, making it one of the softest biomaterials known.  
11  
12  
13  
14  
15  
16  
17  
18  
19  
20  
21  
22  
23

### 24 **Cytoskeletal networks - soft entropic gels**

25  
26 The ultrasoft slime produced by hagfishes is an exceptional material because of its  
27 extremely low modulus of elasticity, but also because it contains secreted  
28 intermediate filaments. In all other organisms, however, intermediate filaments  
29 function exclusively *within* the cell, either as part of the cytoskeleton of a living cell,  
30 or as the fibrous component of the non-living, fibre-reinforced  $\alpha$ -keratins. In the  
31 former case, cytoplasmic intermediate filaments form an elaborate network of  
32 filaments that impart the cell with soft gel-like elasticity. To understand the origin of  
33 this elasticity requires some knowledge of the physical behavior of nano-scale  
34 filaments. Soft gels like gelatin are elastic because the collagen fibrils that make  
35 them up are flexible enough that collisions with solvent molecules make them bend.  
36 The overall effect of this thermal agitation on a long flexible polymer or filament is  
37 that its three dimensional conformation fluctuates over time. When a network of  
38 fluctuating filaments is deformed, the conformational freedom of the filaments is  
39  
40  
41  
42  
43  
44  
45  
46  
47  
48  
49  
50  
51  
52  
53  
54  
55  
56  
57  
58  
59  
60

1  
2  
3 restricted and this represents a decrease in entropy of the network (Heidemann et  
4 al., 2000). The result is the development of an elastic restoring force that resists  
5 deformation and returns the gel to a state of maximum entropy when a load is  
6 removed. The tendency of a filament or polymer molecule to gyrate and therefore  
7 generate entropic gel elasticity can be quantified by a parameter known as the  
8 persistence length (or  $L_p$ ) (Gittes et al., 1993).  $L_p$  can be roughly understood as the  
9 distance over which two points on a filament remain spatially correlated over time  
10 as the filament gyrates due to thermal fluctuations. In isotropic materials,  $L_p$  is  
11 directly related to the bending stiffness of the filament,  $L_p = EI/kT$ , where  $EI$  is the  
12 flexural rigidity and  $kT$  is the thermal energy available to cause fluctuations (Boal,  
13 2002). Filaments with long  $L_p$  appear straight and rigid under the TEM, whereas  
14 filaments and molecules with short  $L_p$  appear wavy. Protein filaments with  
15 diameters on the scale of tens of nanometers typically have  $L_p$  on the scale of  $10^0$ -  
16  $10^3$   $\mu\text{m}$  (Felgner et al., 1996; Gittes et al., 1993; Kojima et al., 1994; Kurachi et al.,  
17 1995). If the filaments are longer than their  $L_p$ , they enjoy conformational freedom  
18 and tend to form filament networks that behave as soft entropic gels.

19  
20  
21  
22  
23  
24  
25  
26  
27  
28  
29  
30  
31  
32  
33  
34  
35  
36  
37  
38  
39  
40  
41  
42  
43 Intermediate filament proteins self-assemble in vitro and in vivo into high aspect  
44 ratio filaments with  $L_p$  values between 0.5-1.0  $\mu\text{m}$  (Hohenadl et al., 1999; Mucke et  
45 al., 2004), which is far less than the length of a typical filament. Suspensions of  
46 intermediate filaments therefore readily form entropic gels, and it is likely that this  
47 soft elasticity dominates the mechanical contribution of intermediate filaments at  
48 low cell strains (Fig. 4). Indeed, much of the work that has been done on the  
49  
50  
51  
52  
53  
54  
55  
56  
57  
58  
59  
60

1  
2  
3 mechanics of intermediate filaments in cells has focused on the properties of  
4  
5 entropic gels that have been constructed from purified intermediate filaments in  
6  
7 vitro. From these studies we know that networks of intermediate filaments are soft  
8  
9 and elastic, with elastic moduli in the range of 30 Pa (Janmey et al., 1991).

10  
11 Compared to gels made from F-actin and microtubules, intermediate filament gels  
12  
13 are softer and far more extensible, and they also exhibit dramatic strain stiffening at  
14  
15 high strains. The low modulus and high extensibility can be partly attributed to the  
16  
17 low persistence length of the filaments, which results in a greater amount of “slack”  
18  
19 in the network. The strain stiffening, however, is most likely a result of the tensile  
20  
21 properties of the individual filaments themselves (Kreplak and Fudge, 2007). In a  
22  
23 recent paper on the mechanical response of the intermediate filament network in  
24  
25 human keratinocytes to uniaxial strain, we showed that the network is capable of  
26  
27 deforming elastically to strains up to 80%, with little or no visible damage to the  
28  
29 network (Fudge et al., 2008). A significant portion of this elasticity can likely be  
30  
31 attributed to soft entropic gel elasticity, whereby cell deformation results primarily in  
32  
33 a decrease in the conformational entropy of the filament network, with very few  
34  
35 filaments being loaded directly in tension.  
36  
37  
38  
39  
40  
41  
42  
43  
44

#### 45 **Hydrated intermediate filaments - rubber-like tensile elements**

46  
47 What happens then at higher strains, when more and more intermediate filaments  
48  
49 are loaded directly in tension? To answer this question, it is important to know the  
50  
51 tensile properties of intermediate filaments. Some of the best information we  
52  
53 currently have about intermediate filament mechanics comes from studying the  
54  
55  
56  
57  
58  
59  
60

1  
2  
3 material properties of hagfish slime threads, which are essentially pure bundles of  
4 intermediate filaments (Downing et al., 1984; Fudge et al., 2003). While they are  
5  
6 small, with an average diameter of about 2  $\mu\text{m}$ , they are much bigger than single 10  
7  
8 nm intermediate filaments, and they can be readily manipulated with a  
9  
10 stereomicroscope and fine forceps (Fig. 5). Using a fine glass rod as a force  
11  
12 transducer, we have conducted tensile tests of slime threads and have found them  
13  
14 to be considerably more compliant and extensible than has been assumed for  
15  
16 intermediate filaments. With an initial stiffness of about 6 MPa, slime threads  
17  
18 behave like nano-scale rubber bands that can recover fully from strains up to 35%  
19  
20 (Fudge et al., 2003). It is this rubber-like elasticity that likely accounts for the ability  
21  
22 of the intermediate filament network in cells to continue to behave elastically long  
23  
24 after filament bundles have been pulled completely taut and entropic gel elasticity is  
25  
26 no longer relevant.  
27  
28  
29  
30  
31  
32  
33  
34  
35  
36

37 When hagfish threads are stretched to strains greater than 35%, they start to  
38  
39 deform plastically, which simply means that they don't recover to their original  
40  
41 dimensions even after the tensile load is released. We have shown using wide  
42  
43 angle synchrotron x-ray microdiffraction that this elastic/plastic transition  
44  
45 corresponds to the point where  $\alpha$ -helical coiled-coils begin to extend and form  
46  
47 stable  $\beta$ -sheet crystals with neighboring protein strands (Fudge et al., 2003).  $\beta$ -  
48  
49 sheet crystals are the structures that lend high strength to spider silk (Gosline et al.,  
50  
51 1999), and their appearance in intermediate filaments makes them far stiffer near  
52  
53 their breaking point than they are at low strains.  
54  
55  
56  
57  
58  
59  
60

1  
2  
3  
4  
5  
6 One of the most surprising properties of slime threads is their ability to deform to  
7  
8 strains well over 200% before they fail. This kind of extensibility far exceeds that of  
9  
10 F-actin and microtubules, which fail at strains well below 1% (Kishino and  
11  
12 Yanagida, 1988; Tsuda et al., 1996). These differences can be understood if one  
13  
14 considers the molecular and supramolecular architecture of these three filament  
15  
16 types. F-actin and microtubules are constructed from globular proteins held  
17  
18 together by relatively weak intermolecular interactions, and there is little overlap of  
19  
20 adjacent protein chains. As a result, when the rupture stress of the weakest  
21  
22 adjacent proteins is reached, the filament fails. In contrast, intermediate filaments  
23  
24 are constructed from staggered filamentous proteins with a great deal overlap  
25  
26 between neighbors. In addition,  $\alpha$ -helices represent a significant amount of “hidden  
27  
28 length” that must be extended before the filaments can be broken. Recent work by  
29  
30 Kreplak et al. using atomic force microscopy has demonstrated that single  
31  
32 intermediate filaments in vitro can deform to strains as high as 250% before  
33  
34 breaking (Kreplak et al., 2005; Kreplak et al., 2008). These results not only reinforce  
35  
36 the slime thread model as a valid way of exploring the mechanics of intermediate  
37  
38 filaments, they raise the possibility that these filaments are virtually unbreakable at  
39  
40 the kinds of strains normally encountered by cells.

41  
42  $\alpha$ -helices are held together by relatively strong hydrogen bonds (Pauling and Corey,  
43  
44 1953) and these must be broken to plastically deform the filaments. Breaking these  
45  
46 “sacrificial” bonds requires a great deal of energy and is one of the things that  
47  
48  
49  
50  
51  
52  
53  
54  
55  
56  
57  
58  
59  
60

1  
2  
3 makes intermediate filaments tough. We have shown that intermediate filaments in  
4  
5 cells appear to deform plastically at uniaxial cell strains higher than 80%, and this  
6  
7 manifests as filament bundles that buckle when the cells return to their original size  
8  
9 (Fudge et al., 2008). Together these results suggest that intermediate filaments in  
10  
11 cells provide soft gel elasticity at low strains and rubberlike elasticity at moderate  
12  
13 strains, but they are also able to absorb large amounts of energy at high strains.  
14  
15 While their high extensibility and fracture mechanics may not be relevant to the  
16  
17 biology of live cells, they may in fact serve a higher purpose under extreme  
18  
19 mechanical loads. Cells are unlikely to survive deformations at which the  
20  
21 intermediate filaments are stretched to strains greater than 250%, but perhaps the  
22  
23 survival of a given cell is not so important. Under these conditions, intermediate  
24  
25 filaments may function to stave off catastrophic mechanical failure of a tissue, which  
26  
27 ultimately could mean the difference between survival and death for an organism.  
28  
29  
30  
31  
32  
33  
34  
35

### 36 **Hard $\alpha$ -keratins - stiff and tough**

37  
38 The concept that intermediate filaments could act as structural agents that continue  
39  
40 to bear mechanical loads even after the cells that house them have been killed is  
41  
42 not all that radical when one considers the case of the  $\alpha$ -keratins.  $\alpha$ -keratins are  
43  
44 biomaterials that are constructed from dead “keratinized” cells whose cytoplasm  
45  
46 consists mostly of intermediate filaments bound up in a high sulfur protein matrix.  $\alpha$ -  
47  
48 keratins include relatively soft materials like the outer layer of epidermis in terrestrial  
49  
50 vertebrates, the stratum corneum. When fully hydrated, soft keratins behave much  
51  
52  
53  
54  
55  
56  
57  
58  
59  
60

1  
2  
3 like hagfish slime threads, but are not quite as extensible, an attribute most likely  
4  
5 imparted by the keratin matrix.  
6  
7  
8  
9

10 But what about hard  $\alpha$ -keratins such as hair, fur, nail, claw, horn, hoof, and baleen?

11  
12 These materials are also constructed primarily from intermediate filaments  
13  
14 embedded in a keratin matrix, but they are obviously much stiffer. To be precise,  
15  
16 the stiffness of a well-studied hard  $\alpha$ -keratin such as wool is about 2.5 GPa in the  
17  
18 hydrated state, which is about as stiff as hard plastic. Compared to slime threads  
19  
20 and stratum corneum, this is about 400-800 times stiffer (Fig. 6) (Fudge et al., 2003;  
21  
22 Park and Baddiel, 1972). How can we explain this huge difference in stiffness in  
23  
24 materials that are both constructed from the same filaments? The answer is likely  
25  
26 intimately tied to the hydration level of the filaments. One clue to this puzzle is the  
27  
28 fact that hard  $\alpha$ -keratins like wool are relatively hydration insensitive, with stiffness  
29  
30 changing only by a factor of 2.7 between dry and wet specimens. Furthermore, the  
31  
32 stress strain curve of dry slime threads is remarkably similar in shape to the curve  
33  
34 for hard keratins like wool (Fudge and Gosline, 2004). These observations, along  
35  
36 with the fact that hard  $\alpha$ -keratins do not swell as much as slime threads do when  
37  
38 they are hydrated, suggest that the intermediate filaments in hard  $\alpha$ -keratins are  
39  
40 maintained in a dry state, even when the material is immersed in water (Fudge and  
41  
42 Gosline, 2004).  
43  
44  
45  
46  
47  
48  
49  
50  
51  
52

53 This conclusion raises the interesting questions of how the intermediate filaments  
54  
55 are initially dehydrated, as well as how they remain that way. The most plausible  
56  
57  
58  
59  
60

1  
2  
3 mechanism is that the filaments, which assemble in the aqueous environment of the  
4 cytoplasm of keratinocytes, are air-dried during the keratinization process, and then  
5  
6 locked in a dehydrated state by the cross-linking of the high sulfur matrix in which  
7  
8 the filaments are embedded (Fudge and Gosline, 2004). If this model is accurate, it  
9  
10 raises further questions about how stiffening is achieved in  $\alpha$ -keratins that never  
11  
12 have the opportunity for air drying, such as whale baleen or the keratinous filiform  
13  
14 papillae found on the tongues of mammals such as cats. We are currently working  
15  
16 on how stiffening is achieved in whale baleen and exploring the possible  
17  
18 contributions of covalent cross-linking and/or mineralization to this unique  
19  
20 keratinous material.  
21  
22  
23  
24  
25  
26  
27  
28  
29

### 30 **Conclusions**

31 Intermediate filaments are relatively insoluble cytoskeletal filaments that over the  
32  
33 course of metazoan evolution have been co-opted for use in a huge diversity of  
34  
35 biomaterials including ultrasoft hagfish slime, soft cytoplasmic gels, rubbery tensile  
36  
37 elements, as well as stiff and fibrous hard  $\alpha$ -keratins. To put this in sharper  
38  
39 perspective, the intermediate-filament based materials described here span a range  
40  
41 of elastic moduli that differ by eleven orders of magnitude at the two extremes  
42  
43 (Table 1). This impressive diversity arises from a variety of mechanisms and speaks  
44  
45 to the versatility of intermediate filaments and the important roles they likely played  
46  
47 in the evolution of animals.  
48  
49  
50  
51  
52  
53  
54

### 55 **Funding**



This work was supported by the Canadian Foundation for Innovation (CFI) and the Natural Sciences and Engineering Research Council (NSERC) of Canada.

## Acknowledgements

We would like to thank Brook Swanson and Mason Dean for organizing this symposium as well as the SICB Divisions of Comparative Physiology and Biochemistry (DCPB) and Vertebrate Morphology (DVM), the Air Force Office of Scientific Research (AFOSR), and the National Science Foundation (NSF) for supporting the symposium.

**Table 1**

Elastic moduli from the variety of intermediate-filament (IF) based materials discussed in this paper.

Material	Type	Stiffness (Pa)	Notes	References
hagfish slime	ultrasoft gel	$2 \times 10^{-2}$	shear modulus	this paper
IF networks	entropic gel	$3 \times 10^1$	shear modulus	1
IF bundles	rubberlike	$6 \times 10^6$	tensile modulus	2
hard $\alpha$ -keratin	stiff polymer	$3 \times 10^9$	tensile modulus	3

1 Janmey et al., 1991

2 Fudge et al., 2003

3 Baden et al., 1974

## FIGURE LEGENDS

### Figure 1

All hagfishes, like this Pacific hagfish (*Eptatretus stoutii*) possess numerous slime glands from which they can release vast amounts of stringy slime when they are stressed or provoked.

### Figure 2

1  
2  
3 Hagfish slime is an ultra-dilute assemblage of seawater, mucus, and fine protein  
4 threads. In this sample produced in the lab from slime collected from an  
5 anaesthetized hagfish, the fine web of entangled slime threads are visible.  
6  
7  
8  
9

### 10 11 12 **Figure 3**

13  
14  
15 Results of a creep test conducted with hagfish slime reconstituted from fresh  
16 exudate mixed with seawater in the lab. At short times the strain oscillates due to  
17 inertio-elastic ringing, in which the sample elasticity couples with the finite  
18 instrument rotational inertia to “ring” at a resonant frequency, just like a mass at the  
19 end of a spring. At longer times the strain is approximately constant,  $\gamma_{ss}$ , and this is  
20 representative of a primarily elastic material response.  
21  
22  
23  
24  
25  
26  
27  
28  
29  
30  
31

### 32 **Figure 4**

33  
34 Deformation of intermediate filaments networks like the ones shown here result in a  
35 decrease in the entropy of the network and the development of an elastic restoring  
36 force. These human keratinocyte cells expressing GFP-tagged keratin 14 (green)  
37 were fixed and stained with rhodamine phalloidin, which highlights the cortical F-  
38 actin (red) in these cells.  
39  
40  
41  
42  
43  
44  
45  
46  
47

### 48 **Figure 5**

49  
50 Hagfish slime threads are relatively pure bundles of intermediate filaments that  
51 exhibit rubberlike elasticity at strains up to 35%. Shown here are a number of  
52  
53  
54  
55  
56  
57  
58  
59  
60

1  
2  
3 thread cells, one of which has started to unravel. When fully unravelled, thread cells  
4  
5 can reach lengths of 15 cm.  
6  
7  
8  
9

### 10 **Figure 6**

11  
12 Comparison of the stress-strain curves for hydrated hagfish slime threads and  
13  
14 hydrated wool fibers. In spite of the fact that wool is comprised primarily of aligned  
15  
16 intermediate filaments, its initial stiffness is about 400x higher than the stiffness of  
17  
18 hydrated slime threads. This dramatic difference may due to a partial dehydration of  
19  
20 the intermediate filaments in wool and other hard  $\alpha$ -keratins.  
21  
22  
23  
24  
25  
26  
27

### 28 **REFERENCES**

- 29  
30  
31 Alberts B, Johnson A, Lewis J, Raff M, Roberts K, 2007. Molecular biology of the  
32  
33 cell, 5th ed. New York: Garland.  
34  
35  
36 Baden HP, Goldsmith LA, Lee L, 1974. The importance of understanding the  
37  
38 comparative properties of hair and other keratinized tissues in studying  
39  
40 disorders of hair. In: The first human hair symposium (Brown AC, ed). New  
41  
42 York: Medcom Press; 388-398.  
43  
44  
45 Boal DH, 2002. Mechanics of the cell. Cambridge: Cambridge University Press.  
46  
47  
48 Bousquet O, Ma LL, Yamada S, Gu CH, Idei T, Takahashi K, Wirtz D, Coulombe  
49  
50 PA, 2001. The nonhelical tail domain of keratin 14 promotes filament  
51  
52 bundling and enhances the mechanical properties of keratin intermediate  
53  
54 filaments in vitro. J Cell Biol 155:747-753.  
55  
56  
57  
58  
59  
60

- 1  
2  
3 Bray D, 2001. Cell Movements: From Molecules to Motility, 2 ed. New York:  
4  
5 Garland.  
6  
7  
8 Downing SW, Salo WL, Spitzer RH, Koch EA, 1981a. The hagfish slime gland: a  
9  
10 model system for studying the biology of mucus. Science 214:1143-1145.  
11  
12 Downing SW, Spitzer RH, Koch EA, Salo WL, 1984. The hagfish slime gland thread  
13  
14 cell. I. A unique cellular system for the study of intermediate filaments and  
15  
16 intermediate filament-microtubule interactions. J Cell Biol 98:653-669.  
17  
18 Downing SW, Spitzer RH, Salo WL, Downing SD, Saidel LJ, Koch EA, 1981b.  
19  
20 Hagfish slime gland thread cells: organization, biochemical features, and  
21  
22 length. Science 212:326-327.  
23  
24  
25  
26  
27 Dutkiewicz JK, 2002. Superabsorbent materials from shellfish waste--a review. J  
28  
29 Biomed Mater Res 63:373-381.  
30  
31  
32 Felgner H, Frank R, Schliwa M, 1996. Flexural rigidity of microtubules measured  
33  
34 with the use of optical tweezers. J Cell Sci 109:509-516.  
35  
36  
37 Fey EG, Wan KM, Penman S, 1984. Epithelial Cytoskeletal Framework and Nuclear  
38  
39 Matrix Intermediate Filament Scaffold - 3-Dimensional Organization and  
40  
41 Protein-Composition. Journal of Cell Biology 98:1973-1984.  
42  
43  
44 Fudge D, Russell D, Beriault D, Moore W, Lane E, Vogl A, 2008. The Intermediate  
45  
46 Filament Network in Cultured Human Keratinocytes is Remarkably  
47  
48 Extensible and Resilient  
49  
50 . PLoS ONE 3:e2327.  
51  
52  
53  
54  
55  
56  
57  
58  
59  
60

- 1  
2  
3 Fudge DS, Gardner KH, Forsyth VT, Riekel C, Gosline JM, 2003. The mechanical  
4 properties of hydrated intermediate filaments: Insights from hagfish slime  
5 threads. *Biophysical Journal* 85:2015-2027.  
6  
7  
8  
9  
10 Fudge DS, Gosline JM, 2004. Molecular design of the alpha-keratin composite:  
11 insights from a matrix-free model, hagfish slime threads. *Proceedings of the*  
12 *Royal Society of London Series B-Biological Sciences* 271:291-299.  
13  
14  
15  
16  
17 Fudge DS, Levy N, Chiu S, Gosline JM, 2005. Composition, morphology and  
18 mechanics of hagfish slime. *Journal of Experimental Biology* 208:4613-4625.  
19  
20  
21  
22 Gittes F, Mickey B, Nettleton J, Howard J, 1993. Flexural rigidity of microtubules  
23 and actin filaments measured from thermal fluctuations in shape. *J Cell Biol*  
24 120:923-934.  
25  
26  
27  
28  
29 Gosline JM, Guerette PA, Ortlepp CS, Savage KN, 1999. The mechanical design of  
30 spider silks: From fibroin sequence to mechanical function. *J Exp Biol*  
31 202:3295-3303.  
32  
33  
34  
35  
36 Heidemann SR, Lamoureaux P, Buxbaum RE, 2000. Opposing views on tensegrity  
37 as a structural framework for understanding cell mechanics. *J Appl Physiol*  
38 89:1670-1678.  
39  
40  
41  
42  
43 Hohenadl M, Storz T, Kirpal H, Kroy K, Merkel R, 1999. Desmin filaments studied  
44 by quasi-elastic light scattering. *Biophys J* 77:2199-2209.  
45  
46  
47  
48  
49  
50  
51  
52  
53  
54  
55  
56  
57  
58  
59  
60
- Howard J, 2001. *Mechanics of Motor Proteins and the Cytoskeleton*. Sunderland,  
Massachusetts: Sinauer Associates.

- 1  
2  
3 Janmey PA, Euteneuer U, Traub P, Schliwa M, 1991. Viscoelastic properties of  
4 vimentin compared with other filamentous biopolymer networks. J Cell Biol  
5 113:155-160.  
6  
7  
8  
9  
10 Kim S, Coulombe PA, 2007. Intermediate filament scaffolds fulfill mechanical,  
11 organizational, and signaling functions in the cytoplasm. Genes Dev  
12 21:1581-1597.  
13  
14  
15  
16  
17 Kishino A, Yanagida T, 1988. Force measurements by micromanipulation of a  
18 single actin filament by glass needles. Nature 334:74-76.  
19  
20  
21  
22 Koch EA, Spitzer RH, Pithawalla RB, Castillos FA, 3rd, Parry DA, 1995. Hagfish  
23 biopolymer: a type I/type II homologue of epidermal keratin intermediate  
24 filaments. Int J Biol Macromol 17:283-292.  
25  
26  
27  
28  
29 Koch EA, Spitzer RH, Pithawalla RB, Parry DA, 1994. An unusual intermediate  
30 filament subunit from the cytoskeletal biopolymer released extracellularly into  
31 seawater by the primitive hagfish (*Eptatretus stoutii*). J Cell Sci 107:3133-  
32 3144.  
33  
34  
35  
36  
37  
38  
39 Kojima H, Ishijima A, Yanagida T, 1994. Direct measurement of stiffness of single  
40 actin filaments with and without tropomyosin by in vitro nanomanipulation.  
41 PNAS USA 91:12962-12966.  
42  
43  
44  
45  
46 Kreplak L, Bar H, Leterrier JF, Herrmann H, Aebi U, 2005. Exploring the mechanical  
47 behavior of single intermediate filaments. Journal of Molecular Biology  
48 354:569-577.  
49  
50  
51  
52  
53 Kreplak L, Fudge D, 2007. Biomechanical properties of intermediate filaments: from  
54 tissues to single filaments and back. Bioessays 29:26-35.  
55  
56  
57  
58  
59  
60

- 1  
2  
3 Kreplak L, Herrmann H, Aebi U, 2008. Tensile properties of single desmin  
4  
5 intermediate filaments. *Biophysical Journal* in press.  
6  
7  
8 Kurachi M, Hoshi M, Tashiro H, 1995. Buckling of a single microtubule by optical  
9  
10 trapping forces: direct measurement of microtubule rigidity. *Cell Motil*  
11  
12 *Cytoskel* 30:221-228.  
13  
14  
15 Lim J, Fudge DS, Levy N, Gosline JM, 2006. Hagfish slime ecomechanics: testing  
16  
17 the gill-clogging hypothesis. *Journal of Experimental Biology* 209:702-  
18  
19 10:702-710.  
20  
21  
22 Ma L, Xu J, Coulombe PA, Wirtz D, 1999. Keratin filament suspensions show  
23  
24 unique micromechanical properties. *J Biol Chem* 274:19145-19151.  
25  
26  
27 Macosko CW, 1994. Concentric cylinder rheometer. In: *Rheology : principles,*  
28  
29 *measurements, and applications.* New York: Wiley-VCH; 188.  
30  
31  
32 Magin TM, Reichelt J, Hatzfeld M, 2004. Emerging functions: diseases and animal  
33  
34 models reshape our view of the cytoskeleton. *Exp Cell Res* 301:91-102.  
35  
36  
37 Magin TM, Vijayaraj P, Leube RE, 2007. Structural and regulatory functions of  
38  
39 keratins. *Exp Cell Res* 313:2021-2032.  
40  
41  
42 Mucke N, Kreplak L, Kirmse R, Wedig T, Herrmann H, Aebi U, Langowski J, 2004.  
43  
44 Assessing the flexibility of intermediate filaments by atomic force microscopy.  
45  
46 *Journal of Molecular Biology* 335:1241-1250.  
47  
48  
49 Omary MB, Coulombe PA, McLean WHI, 2004. Mechanisms of disease:  
50  
51 Intermediate filament proteins and their associated diseases. *N Engl J Med*  
52  
53 351:2087-2100.  
54  
55  
56  
57  
58  
59  
60

- 1  
2  
3 Park AC, Baddiel CB, 1972. Rheology of the stratum corneum: a molecular  
4  
5 interpretation of the stress-strain curve. *J Soc Cosmet Chem* 23:3-12.  
6  
7  
8 Pauling L, Corey RB, 1953. Compound Helical Configurations of Polypeptide  
9  
10 Chains: Structure of Proteins of the alpha-Keratin Type. *Nature* 171:59-61.  
11  
12  
13 Sellers LA, Allen A, 1989. Gastrointestinal mucus gel rheology. In: *Mucus and*  
14  
15 *Related Topics* (Chantler E, Ratcliffe NA, eds). Cambridge, UK: Company of  
16  
17 Biologists Limited; 65-71.  
18  
19  
20 Spitzer RH, Downing SW, Koch EA, Salo WL, Saidel LJ, 1984. Hagfish slime gland  
21  
22 thread cells. II. Isolation and characterization of intermediate filament  
23  
24 components associated with the thread. *Journal of Cell Biology* 98:670-677.  
25  
26  
27 Spitzer RH, Koch EA, 1998. Hagfish skin and slime glands. In: *The Biology of*  
28  
29 *Hagfishes* (Jorgensen JM, Lomholt JP, Weber RE, Malte H, eds). London:  
30  
31 Chapman & Hall; 109-132.  
32  
33  
34 Spitzer RH, Koch EA, Downing SW, 1988. Maturation of hagfish gland thread cells:  
35  
36 composition and characterization of intermediate filament polypeptides. *Cell*  
37  
38 *Motil Cytoskel* 11:31-45.  
39  
40  
41 Tsuda Y, Yasutake H, Ishijima A, Yanagida T, 1996. Torsional rigidity of single actin  
42  
43 filaments and actin-actin bond breaking force under torsion measured  
44  
45 directly by in vitro micromanipulation. *PNAS USA* 93:12937-12942.  
46  
47  
48 Windoffer R, Woll S, Strnad P, Leube RE, 2004. Identification of novel principles of  
49  
50 keratin filament network turnover in living cells. *Molecular Biology of the Cell*  
51  
52 15:2436-2448.  
53  
54  
55  
56  
57  
58  
59  
60



1  
2  
3 Yamada S, Wirtz D, Coulombe PA, 2003. The mechanical properties of simple  
4  
5 epithelial keratins 8 and 18: discriminating between interfacial and bulk  
6  
7  
8 elasticities. J Struct Biol 143:45-55.  
9  
10  
11  
12  
13  
14  
15  
16  
17  
18  
19  
20  
21  
22  
23  
24  
25  
26  
27  
28  
29  
30  
31  
32  
33  
34  
35  
36  
37  
38  
39  
40  
41  
42  
43  
44  
45  
46  
47  
48  
49  
50  
51  
52  
53  
54  
55  
56  
57  
58  
59  
60

For Peer Review



Figure 1. All hagfishes, like this Pacific hagfish (*Eptatretus stoutii*) possess numerous slime glands from which they can release vast amounts of stringy slime when they are stressed or provoked.

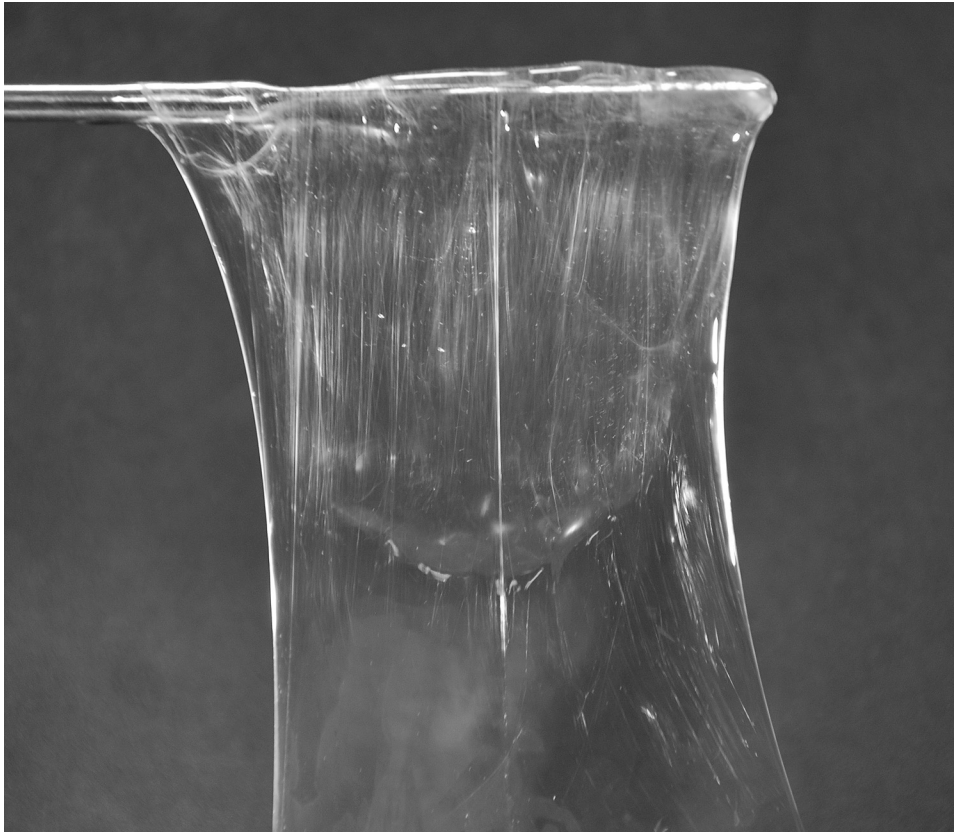


Figure 2. Hagfish slime is an ultra-dilute assemblage of seawater, mucus, and fine protein threads. In this sample produced in the lab from slime collected from an anaesthetized hagfish, the fine web of entangled slime threads are visible.

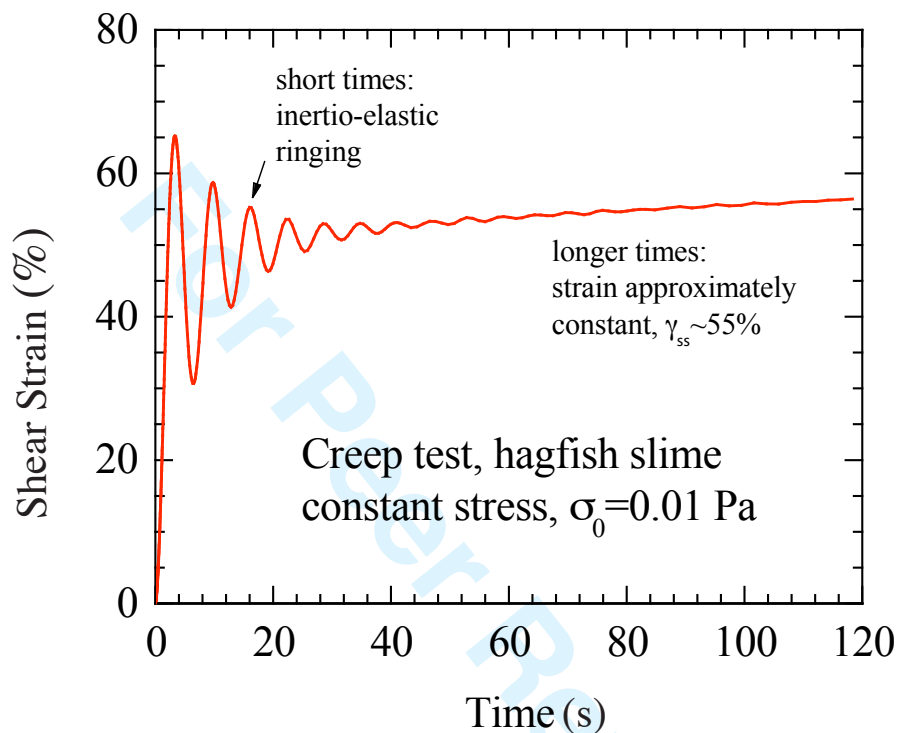


Figure 3. Results of a creep test conducted with hagfish slime reconstituted from fresh exudate mixed with seawater in the lab. At short times the strain oscillates due to inertio-elastic ringing, in which the sample elasticity couples with the finite instrument rotational inertia to “ring” at a resonant frequency, just like a mass at the end of a spring. At longer times the strain is approximately constant,  $\gamma_{ss}$ , and this is representative of a primarily elastic material response.

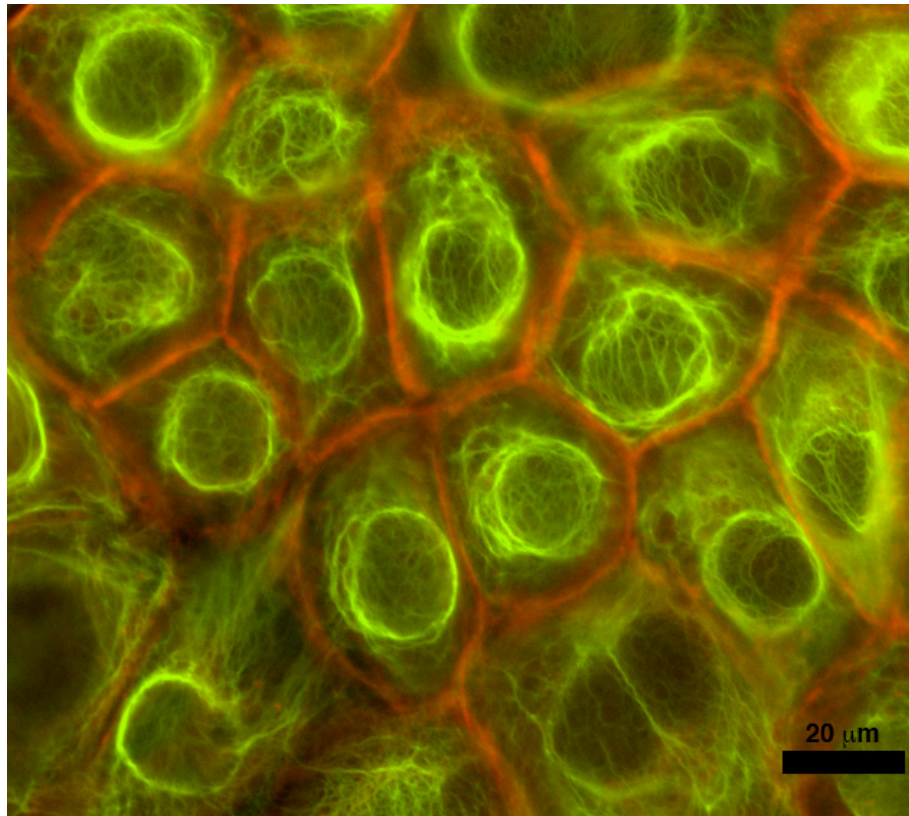


Figure 4. Deformation of intermediate filaments networks like the ones shown here result in a decrease in the entropy of the network and the development of an elastic restoring force. These human keratinocyte cells expressing GFP-tagged keratin 14 (green) were fixed and stained with rhodamine phalloidin, which highlights the cortical F-actin (red) in these cells.



Figure 5. Hagfish slime threads are relatively pure bundles of intermediate filaments that exhibit rubberlike elasticity at strains up to 35%. Shown here are a number of thread cells, one of which has started to unravel. When fully unravelled, thread cells can reach lengths of 15 cm,.

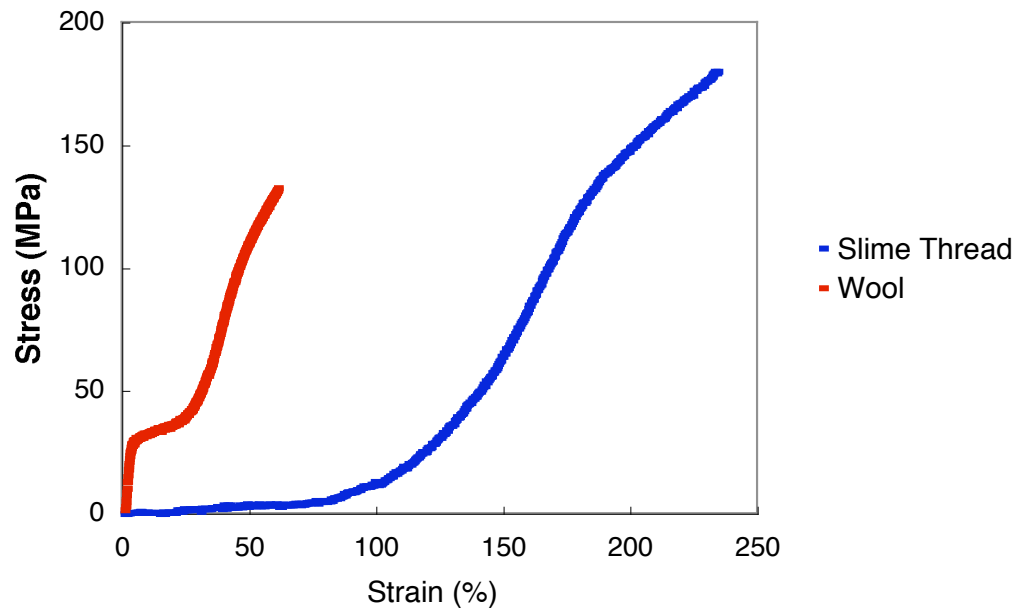


Figure 6. Comparison of the stress-strain curves for hydrated hagfish slime threads and hydrated wool fibers. In spite of the fact that wool is comprised primarily of aligned intermediate filaments, its initial stiffness is about 400x higher than the stiffness of hydrated slime threads. This dramatic difference may be due to a partial dehydration of the intermediate filaments in wool and other hard  $\alpha$ -keratins.