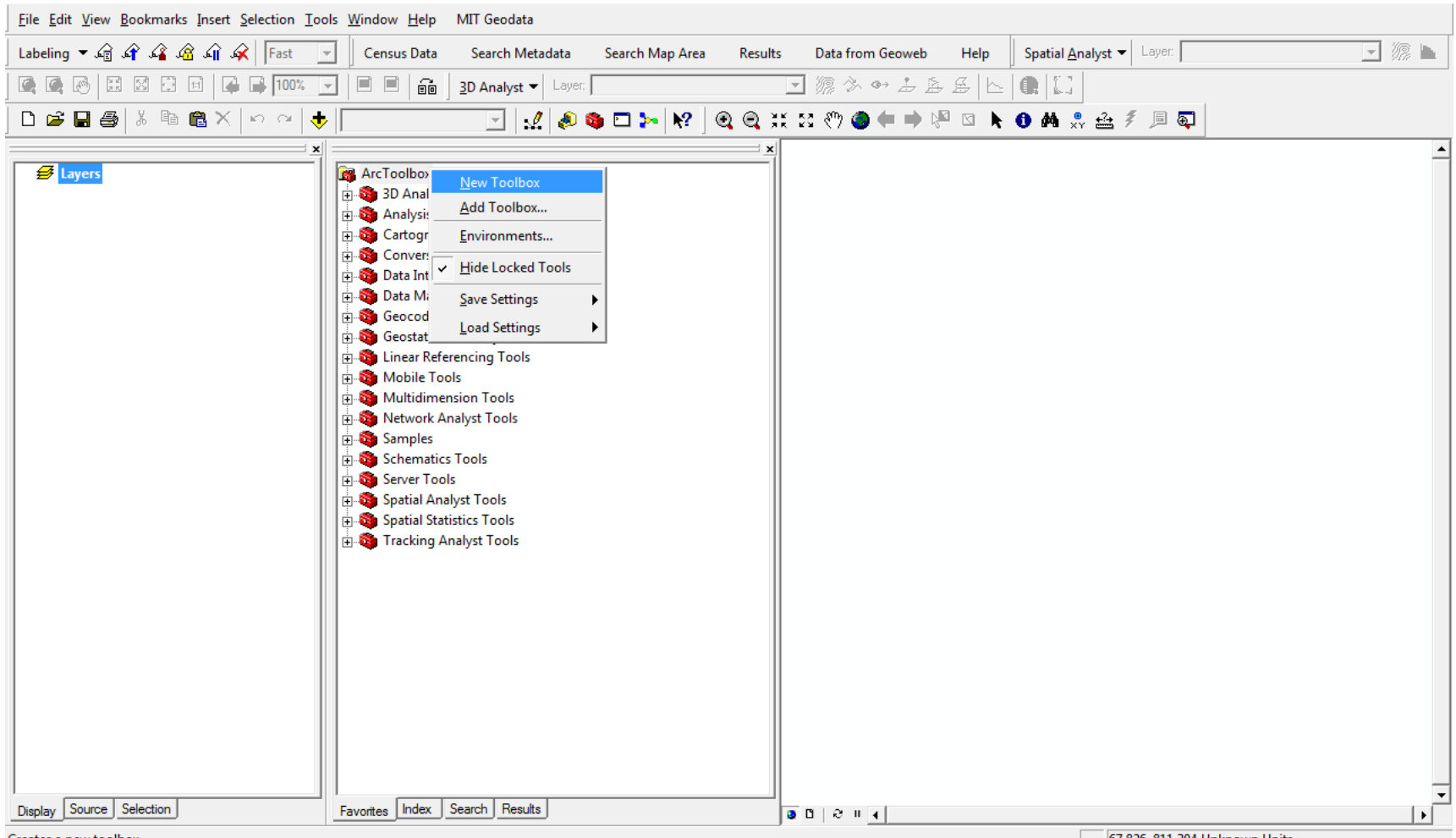


Steps to create a savable new model builder and access it later

Prepared by 11.520 Staff

Nov 22, 2010

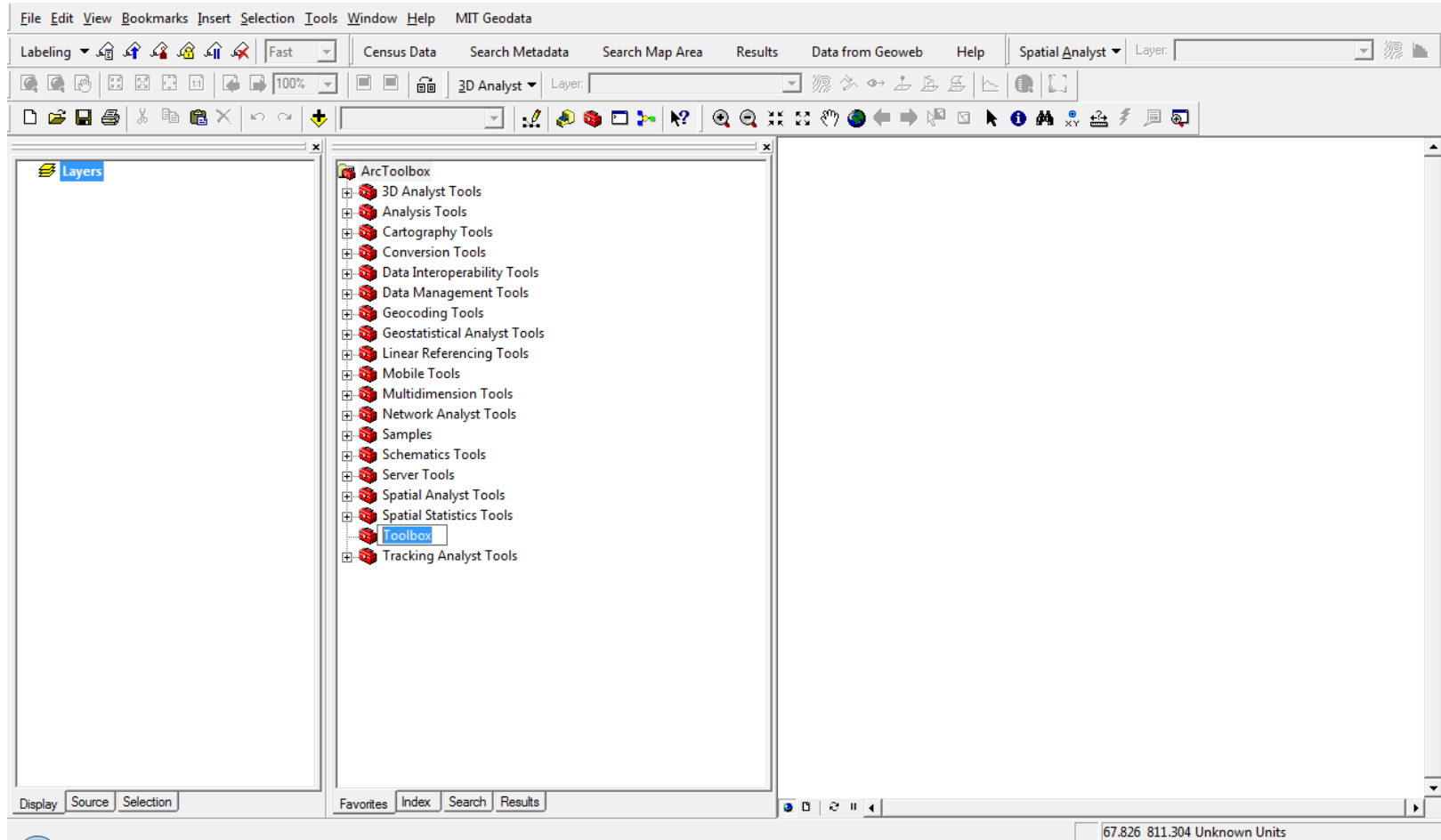
Step 1: Create a New Toolbox



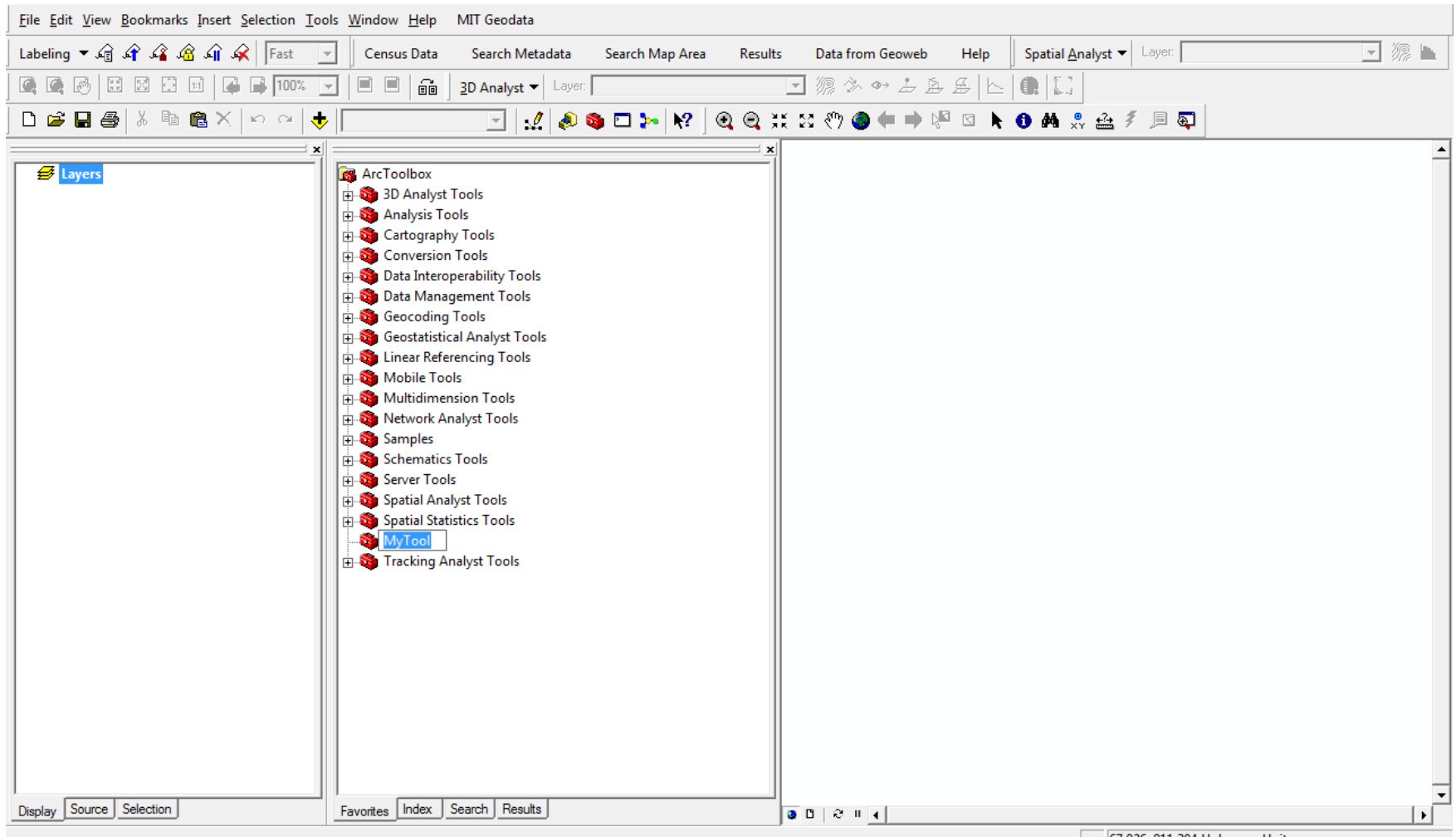
Creates a new toolbox

67.826 811.304 Unknown Units

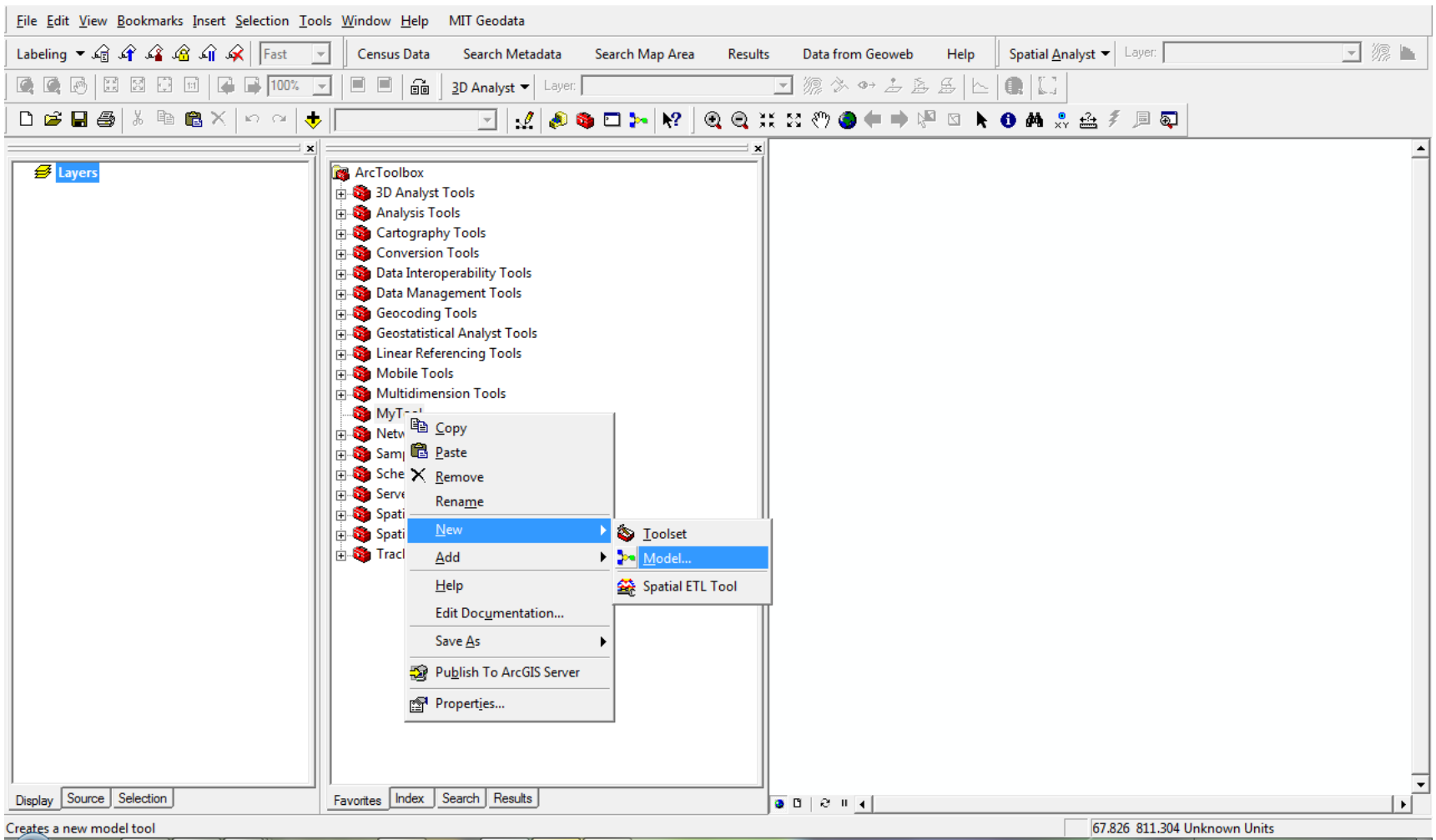
Step 1: Create a New Toolbox



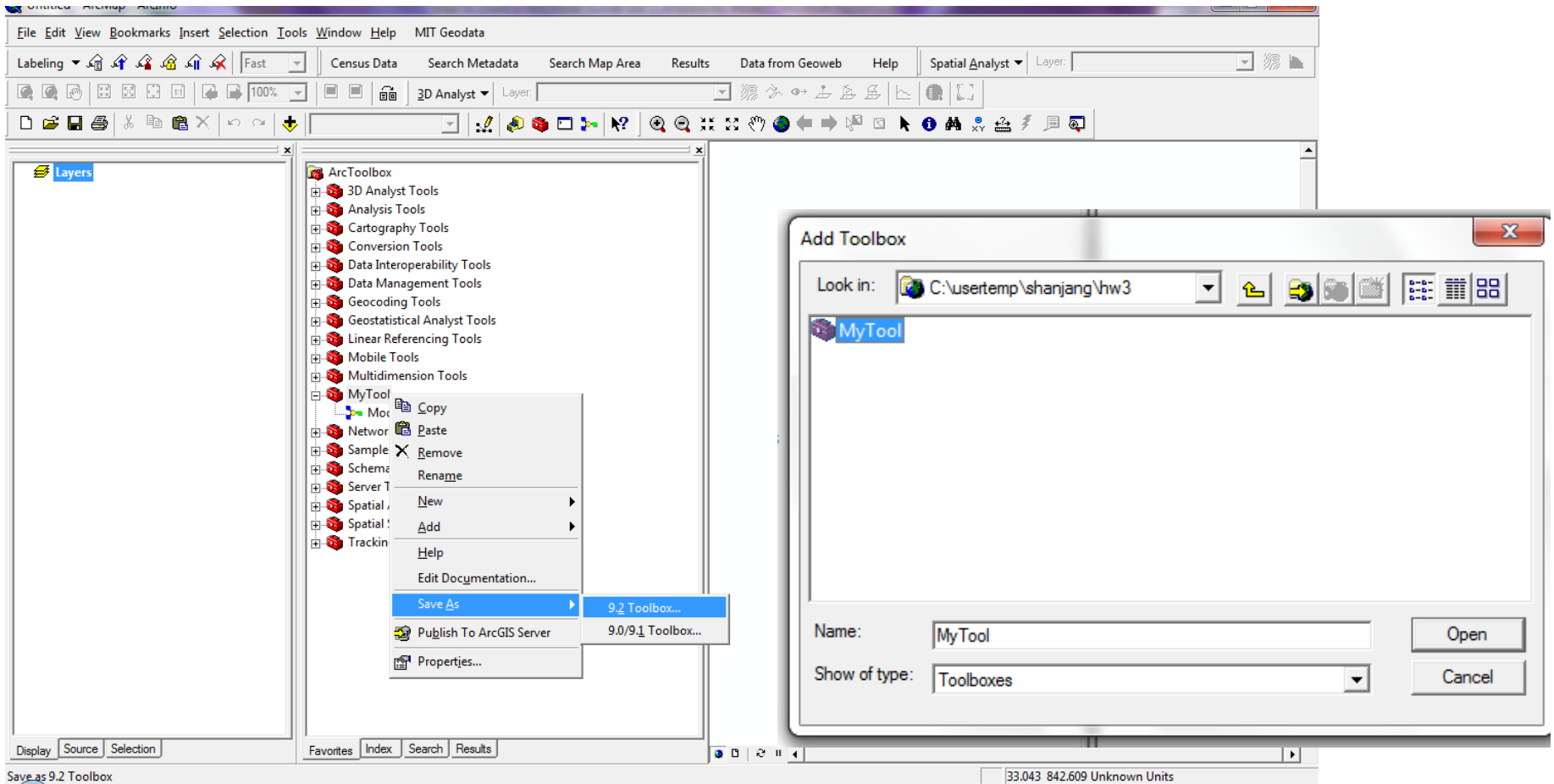
Step 1: Create a New Toolbox



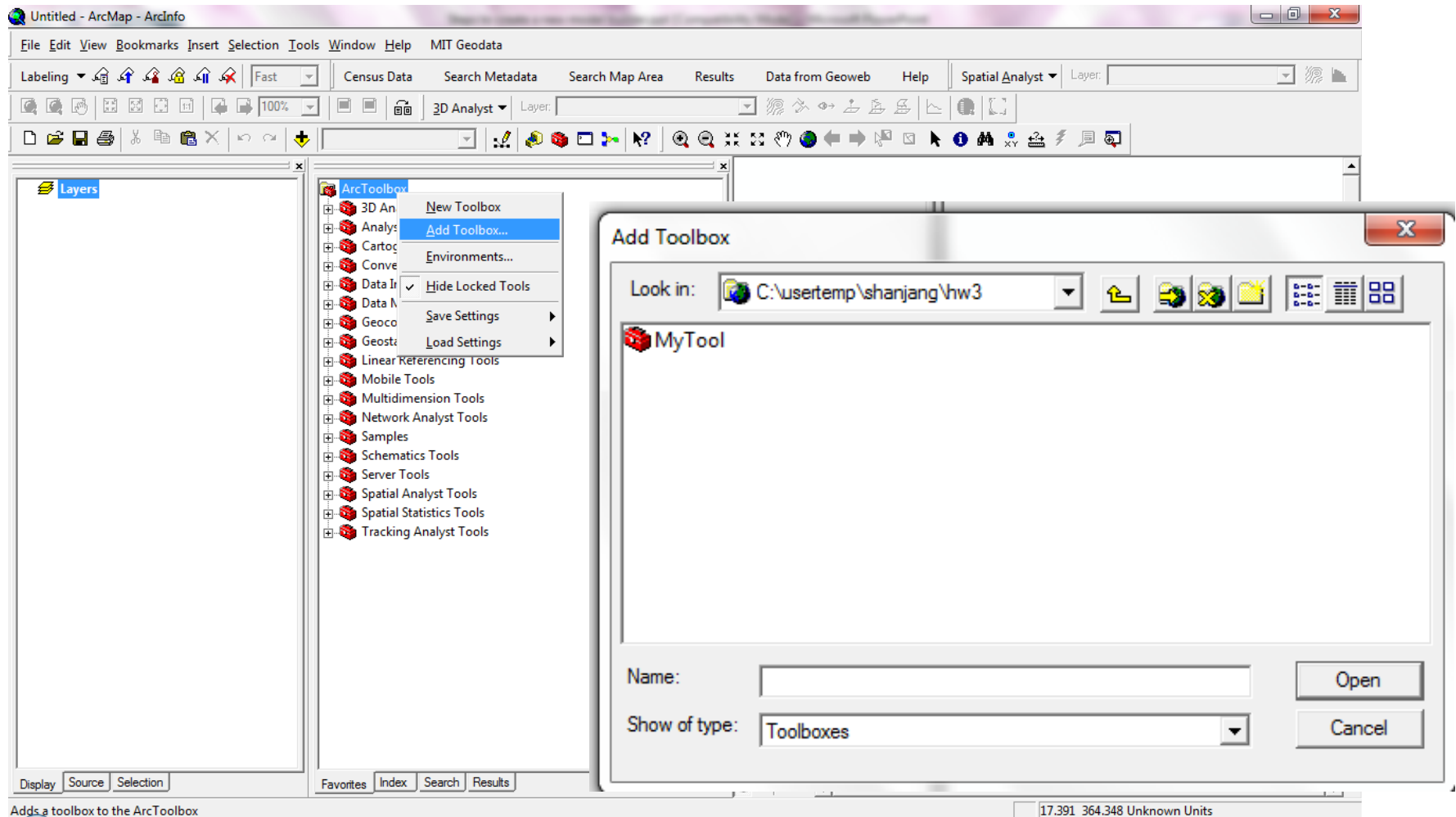
Step 2: Add a New Model



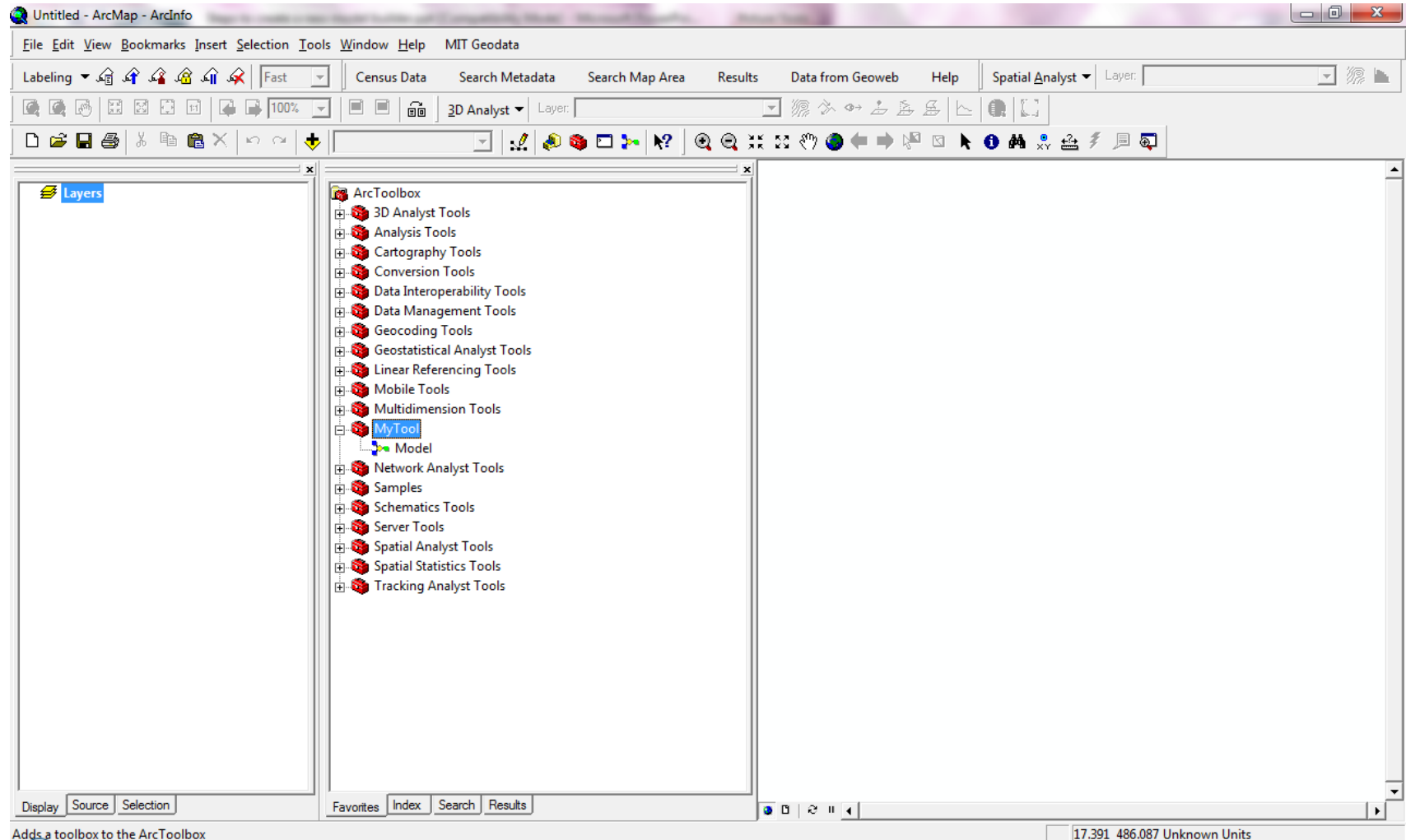
Step 3: Save your model builder



Step 4: How to access your saved model builder



Step 4: How to access your saved model builder



Adds a toolbox to the ArcToolbox